



AG UPDATE

FALL 2025

Hardin County Cooperative Extension
111 Opportunity Way, Elizabethtown, KY
(270) 765 - 4121 | hardin.ca.uky.edu



AGENT MESSAGE

I don't think I've experienced weather like this in my entire life. First the flooding, then tornadoes, now the heat. I came back from a trip to Florida a few weeks ago, and it was so hot, I thought I was running a fever. The other day I spent an afternoon in the shade, and the rest of the day my skin was so flushed that I thought I got sunburnt.

While the corn's loving it, I can't imagine what it's like for the cattle. Be attentive to those animals, especially if you've got fescue dominated pastures or if it dries out and you've got any warm season grasses like Johnsongrass or Sorghum-Sudan. We'll have nitrate and cyanide testing strips available at the office.

Plenty of people were still able to plant despite all the wetness at the beginning of summer. We're eager to help here at the office whether you need any samples to be sent for disease ID, or you've got some Johnsongrass you can't kill and want it sent for herbicide resistance testing. Hopefully, by October we'll have healthy plants and dry ground for the harvest.

I hope to see some of you at the State Fair. I'm very excited for the Country Ham breakfast, where the state's prettiest lady will present a big, salty ham to the highest bidders, who will likely pay more than \$10 million for it. I never would've imagined that such a ceremony existed, and yet, it's still somehow less bizarre than the weather. - Joe

Joseph Paterson

Hardin County CES Agent for ANR
joseph.paterson@uky.edu

Ashley Norton

Hardin County CES Agent for ANR
ashley.norton@uky.edu



GRAIN YIELD CONTEST

Harvest will be here before we know it. The Cooperative Extension Service conducts statewide corn, soybean and wheat yield contests each year. The contest is sponsored by commodity groups, and winners at the district and state level are recognized at the Kentucky Commodity Conference in Bowling Green each year.

All of the yield contest entries can be found online at <https://graincrops.ca.uky.edu/> or at the extension office.

For more information on how you can enter any of the Kentucky Yield Contests, call me at 270-765-4121 or send me an email at ashley.norton@uky.edu



ATTENTION:

We're Compiling a list of AG services available to the county including but not limited to:

- Lime Hauling
- Fertilizer Spreading
- Round or Square baling
- bale wrapping
- No-till seed drilling



please contact the hardin county extension office if you are interested in being added to the list at (270)765-4121 or emailing joseph.paterson@uky.edu.



TEXT UPDATES

If you want to receive texts about upcoming programs text the words "JOIN AG" to (270) 765-4121. You will be notified of all ag programs by text.



Kentucky Weather Alert App

This ad-free app from the UK Ag Weather Center is an excellent resource for staying safe and informed. It provides daily and hourly forecasts, high-resolution radar, National Weather Service alerts sent directly to your phone, and a link to this update. Without any distracting ads, this app can act as another reliable warning source during tonight's severe weather. Be sure to check it out by scanning or clicking the QR codes below to download the app on both iOS and Google Play platforms



SPECIALIZATIONS:

ASHLEY NORTON

Focuses in:

- Row crops:
Corn,
Soybeans, etc.
- Ag
Economics

JOE PATERSON

Focuses In:

- Livestock
- Forage
- Natural
Resources

Upcoming Hardin County Programs...

 Cooperative
Extension Service



RINSE & RETURN

Plastic Pesticide Recycling Program

Wednesday, September 10, 2025
9:00 AM - 11:00 AM
Hardin County Extension Office
111 Opportunity Way
Elizabethtown, KY 42701

Plastic pesticide containers up to five gallons in size that have been triple- or pressure-rinsed are clean inside and out, as well as the caps and labels removed, will be accepted for recycling.

The program is open and free to all residents of Hardin County.

This program is a cooperative, environmental effort by Hardin Fiscal Court, Hardin County Farm Bureau, Hardin County Cooperative Extension Service and local ag crop product retailers.

CHUTE SIDE BQCA TRAINING

HARDIN COUNTY COOPERATIVE
EXTENSION SERVICE
111 OPPORTUNITY WAY,
ELIZABETHTOWN, KY 42701



September 11, 2025
6:00pm ET

HARDIN
COUNTY
CATTLEMEN'S
ASSOCIATION

RSVP by September 9th.

Please call or text 270-765-4121 to register
There will be dinner provided.

Beef Quality and Care Assurance training is recommended
for all cattle producers. It is also required for some investment
areas of the CAIP program.

Cooperative
Extension Service

Agriculture and Natural Resources
Family and Consumer Sciences
4-H Youth Development
Community and Economic Development

MARTIN-GATTON COLLEGE OF AGRICULTURE, FOOD AND ENVIRONMENT

Educational programs of Kentucky Cooperative Extension serve all people regardless of economic or social status and will not discriminate on the basis of race, color, ethnic origin, national origin, creed, religion, political belief, sex, sexual orientation, gender identity, gender expression, pregnancy, marital status, genetic information, age, veteran status, physical or mental disability or impairment or retaliation for prior civil rights activity. Reasonable accommodation of disability may be available with prior notice. Program information may be available in languages other than English.
University of Kentucky, Kentucky State University, U.S. Department of Agriculture, and Kentucky Counties, Cooperating

Lexington, KY 40506



Back to School Season is starting... for **Beef Producers!**

There are several beef events this September, here in Hardin County, and throughout the state:

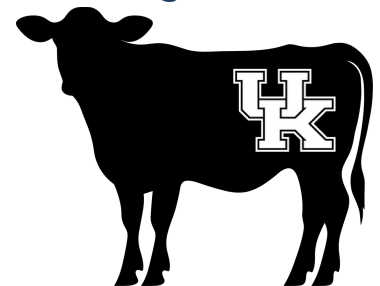
Feeder Calf Grading School, September 8th, Lexington, KY.

Free BQCA Chute Side Training, September 11th, Elizabethtown, KY.

UKY Beef Bash, September 20th in Versailles, KY.

Intermediate Grazing Day, September 24th and 25th, Versailles, KY.

Fencing School, September 30th, Elizabethtown, KY.



Joe will be traveling to all out-of-county events, so fill out [this survey](#) if you are interested in transportation opportunities.

More details for all of these events can be found on the next page, by calling the extension office at (270)765-4121, or emailing joseph.paterson@uky.edu.

Upcoming Statewide Events...

UK Cooperative Extension Service

FEEDER CALF GRADING SCHOOL

Join us for an engaging feeder calf program where you will gain experience in grading and evaluating feeder calves. Learn key strategies to improve your marketing success and maximize profits.

REGISTER NOW

September 8th

6:00pm at Bluegrass Stockyards

FOR MORE INFORMATION OR TO RSVP

Call your county Extension Office  4561 Iron Works Pike, Lexington, KY 40511

Please RSVP by Friday August 29th

Cooperative Extension Service
Martin-Gatton College of Agriculture, Food and Environment
Agriculture and Natural Resources
Hardy and Sustainable
A UK World-Class Institution
Cooperative Extension Service
Martin-Gatton College of Agriculture, Food and Environment
Agriculture and Natural Resources
Hardy and Sustainable
A UK World-Class Institution



BEEF BASH

Save the Date

SEPTEMBER 20, 2025

9:00 AM - 3:30 PM

C. ORAN LITTLE RESEARCH FARM

UK Cooperative Extension Service



2025 Intermediate Grazing School

This program is designed for producers and agricultural professionals to sharpen their skills as a grazer. Topics covered include grazing math, portable watering systems, forage plant identification and growth, nutrient cycling in healthy pasture ecosystems, and more with an emphasis on ruminants – beef, sheep, dairy, goats.

Wednesday, September 24 & Thursday, September 25, 2025

Woodford County Extension Office
184 Beasley Road
Versailles, KY 40383
7:30 a.m. – 4:00 p.m. EST

COST: \$60/participant -- includes notebook, refreshments, and lunches

ONLINE Registration with Credit Card:

<https://2025IntermediateGrazing.eventbrite.com>



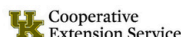
Registration by U.S. Mail: Caroline Roper
UK Research and Education Center
P.O. Box 469
Princeton, KY 42445

Name: _____
Street: _____
City: _____ State: _____ Zip code: _____
Email: _____ Cell Phone: _____

Number of participants _____ x \$60 per participant = _____ **Total Cost**



Make CHECKS payable to: KFGC



For more information contact Caroline Roper at 270-704-6618 or Caroline.Roper@uky.edu

2025 UKY Fall Fencing Schools

This program is designed for producers and agricultural professionals to learn the newest fencing methods and sound fencing construction through a combination of classroom and hands-on learning.

Tuesday, September 30, 2025

Hardin County Cooperative Extension
111 Opportunity Way
Elizabethtown, KY
8:30 a.m. – 5:00 p.m. EST
7:30 a.m. – 4:00 p.m. CDT

Thursday, October 2, 2025

Russell County Extension Office
2688 S. HWY 127
Russell Springs, KY 42642
7:30 a.m. – 4:00 p.m. CDT

COST: \$35/participant -- includes notebook, refreshments, safety glasses, hearing protection, and lunch

ONLINE Registration with Credit Card:

<https://FallFencingElizabethtown.eventbrite.com>

<https://FallFencingRussellSprings.eventbrite.com>



Registration by U.S. Mail: Caroline Roper
UK Research and Education Center
P.O. Box 469
Princeton, KY 42445

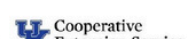
Name: _____
Street: _____
City: _____ State: _____ Zip code: _____
Email: _____ Cell Phone: _____

Number of participants _____ x \$35 per participant = _____ **Total Cost**

_____ Elizabethtown (September 30)

_____ Russell Springs (October 2)

Make CHECKS payable to: KFGC



For more information contact Caroline Roper at 270-704-6618 or Caroline.Roper@uky.edu



Learn at Home – Webinars

SURVIVING HIGH PRICE \$ WEBINAR SERIES



WEDNESDAYS: 2-3 P.M. ET | 1-2 P.M. CT | 12-2 P.M. MT | 11-12 P.M. PT

Join us for a 6-week series to learn about & discuss the uniqueness of the current cattle cycle so we can better understand how to help our producers manage their operations through record-high prices!

Speakers will include Extension economists and specialists from across the United States.

DATES	TOPICS
September 10	Industry Margins & Beef Demand
September 17	Differences in this Cattle Cycle & Import Dynamics
October 1	Risk Management & What To Do With Profits
October 8	Operation Resiliency & Contract Grazing
October 22	Integrated Crop-Livestock Systems & How Not to Need a Hay Baler Defining "Better Genetics" & Economics of Reproduction Strategies
October 29	

All About Goats! Webinar

JOIN EXTENSION AND INDUSTRY PROFESSIONALS FOR THE FALL 2025 SERIES



Goat Health and Care Sept. 22

During this session, Extension Specialist, Dr. Brady Campbell, will review proper care for goats of all ages and explain how to help keep them healthy and continue production.

Farm Business and Management Oct. 6

Extension Specialist, Eric Richer, and Extension Educator, Pressley Buurma, will help guide participants in farm management strategies and provide options for enterprise budgeting and record keeping as it relates to goat production.

Goat Processing Oct. 20

Throughout this presentation, Extension Specialist, Dr. Lyda Garcia, will explain the cuts of a carcass and how to process a goat at home.

Livestock Marketing Nov. 3

Join us as Extension Specialist, Garth Ruff, discusses the ins and outs of the goat market. He will also discuss how to market goats to fill the current wants and needs of the customers.

Hay and Grain Production Nov. 17

Throughout this session, Extension Educator, Jordan Penrose, will present tips and tricks on hay and grain production for goats as well as what type of crops would work best for your production system.

Coyote Management Dec. 1

This session is going to focus on how to manage interactions between coyotes and goats. Experts will also explain the current status of coyote research in Ohio.

Open Forum: Ask Me Anything Dec. 15

Have a burning question that was not answered during one of our past webinar sessions? Join Extension Educators and Specialists to get your questions answered!

Webinars are hosted via Zoom (7-8 p.m. EST). Register at:

go.osu.edu/allaboutgoats25



Visit this link or scan the QR Code to register: bit.ly/register-for-SHPwebinar



UF IFAS Extension

THE OHIO STATE UNIVERSITY
EXTENSION

RSU EXTENSION

COOPERATIVE EXTENSION

UTIA INSTITUTE OF AGRICULTURE

Martin-Gatton
College of Agriculture
Food and Environment

extension

UNIVERSITY OF ARKANSAS

TEXAS A&M AGRILIFE
EXTENSION

The University of Florida is an Equal Opportunity Institution. The University of Florida is committed to providing universal access to all of our events. For disability accommodations such as sign language interpreters and listening devices, please contact Hannah Baker, h.baker@ufl.edu, 863-374-7051 at least 2 week in advance. Advance notice is necessary to arrange for some accessibility needs.

Ohio State University Extension is part of The Ohio State University College of Food, Agricultural, and Environmental Sciences.

CFAES provides research and related educational programs to clientele on a nondiscriminatory basis. For more information, visit cfaes.osu.edu/hondiscrimination. For an accessible format of this publication, visit cfaes.osu.edu/accessibility.

FromtheWoodsToday.com

LIVE ON 8/20/25



Firewood In August? Do's and Don'ts

Wednesday @ 11 a.m. (EST)



Beef Bash 2025

The UK Beef IRM team and the Kentucky Cattlemen's Association are proud to host Beef Bash again at the University of Kentucky C. Oran Little Research Center (LRC) in Woodford County on Sept. 20. This event combines social, educational and industry interaction and should have something for everyone who is interested in beef and the Kentucky beef industry. We moved Beef Bash to a Saturday so we could include youth and have several sessions designed for hands-on experiences for kids interested in learning more about beef cattle. The staging area will be under the big tent near the Intensive Research Building this year. We will have live cattle demonstrations, research presentations, commercial and educational exhibits. You will have opportunities to take various tours that will be available. or you can simply sit on a bale of straw and visit with university or industry leaders, commercial representatives, or your fellow cattle producers. Most of the UK beef specialists, forage specialists and researchers, along with specialists from other disciplines, will be there to participate in the program and to visit with you. We will be updating information from time to time but here is a general description of what you can see and do:

Cattle. We manage approximately 150 cows and will be calving by mid-September. Most of the cows are commercial Angus cows with some Hereford and Simmental influence. All females are subjected to two rounds of fixed-timed AI and are raised on the farm under a strict herd health program. We'll have several cattle exhibits to illustrate various management practices. Kirk Vanzant, UK Beef Farm manager, Darrh Bullock, and I are happy to discuss the breeding and management programs with you.

Commercial exhibits. A large tent in the staging area will house about 30-40 commercial exhibits and serve as the focal point of all activities. You can visit with various company representatives as you please and make plans for purchasing products for weaning calves or wintering the cow herd. Information on many new products will be available. Take your time and visit a while.

Educational opportunities. Most of the faculty involved with the beef industry will be available and sharing some insights with attendees. Youth who attend will get several hand-on opportunities to learn about various aspects of beef production. The educational topics include cooking demonstrations and the value of beef in the diet, advances in beef cattle nutrition, forage management tips, managing fescue toxicosis, incorporating precision ag in beef cattle systems, and chute-side pregnancy diagnosis and techniques to synchronize estrus for AI. As you can tell, the topics cover a wide variety of topics which might relate to you and your cattle operation.

Beef Bash 2025

Social: Our main goal with Beef Bash is fellowship. Visit with the leadership of the Kentucky Cattlemen's Association and the University of Kentucky. Bring any prospective agriculture students, especially those interested in animal and food sciences with you. The Beef Extension specialists and researchers will, of course, be available to visit and answer questions. KCA staff will be represented with leaders from across the state. Come and visit with other cattlemen from across the state and be a part of making KCA the voice for all Kentucky cattle producers.

Research Results: One key to Beef Bash is that our clientele gets to learn about the research conducted at the IRC to improve the beef herds of Kentucky and beyond. This is a key opportunity to interact with our researchers and ask questions pertaining to their research. Our beef nutrition researchers are the best in the world, and Beef Bash is an excellent opportunity to get a taste of the work that is being done here in Kentucky. Cutting-edge research abounds at the LRC, and we are excited to share these findings and the direction of this work with you.

USDA-ARS: Faculty working with the USDA-ARS will also attend to discuss their research and its application to the Kentucky beef industry. This group is expanding its impact in Kentucky and has considerably exciting news to share with those attending.

We hope to see you at the IRC in Woodford County. You can register on-site, but we prefer you to preregister so we can more efficiently organize lunch. To preregister contact your local extension office or email Maggie.ginn@uky.edu.

You are important to us and the beef industry. Make plans now to spend some time with folks who are interested in the same things that you are - improving our position in the beef industry. Mark Sept. 20 on your calendar and bring a neighbor. Consider this my personal invitation to help make this the biggest "bash" ever!

**Source: Les Anderson Beef Extension Professor,
University of Kentucky**

Corn Leafhopper Detected in Kentucky Corn in 2025

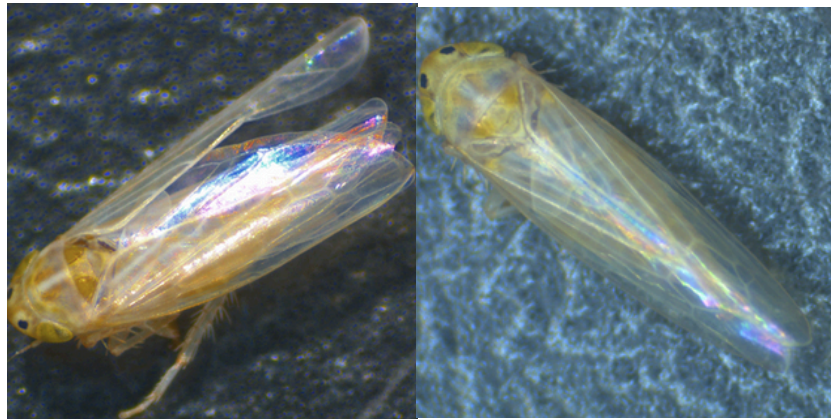
Current Status

Corn leafhopper has been confirmed in Kentucky corn as of mid-July 2025. The corn leafhopper, *Dalbulus maidis* (Hemiptera: Cicadellidae), has become a major pest in corn fields across South and Central America due to its ability to transmit plant pathogens. It is the primary vector of corn stunt Spiroplasma (*Spiroplasma kunkelii*), maize bushy stunt (MBS) phytoplasma, and maize rayado fino virus (MRFV), which are associated with the disease corn stunt.

Corn leafhopper was first detected in 2024 in a suction trap at the University of Kentucky's Research and Education Center in Princeton (western Kentucky). In 2025, corn leafhoppers have been identified on yellow sticky traps and direct visual inspections in commercial fields in Caldwell, Christian, and Trigg counties. However, corn leafhoppers have not been found in yellow sticky traps placed in commercial fields in Daviess, Henderson, and Wayne counties so far this year.

Corn Leafhopper Description

Adult corn leafhoppers are about 1/8 inch long and range in color from pale yellow to white. A key distinguishing feature which helps differentiate them from other leafhopper species commonly found in corn is the presence of two dark spots surrounded by whitish halos, located between the eyes (Figure 1). Corn leafhoppers will have white veins on their wings, light abdomens and no facial markings.



Damage to Corn

Corn leafhoppers are sap feeding insects, and they can cause significant direct damage if populations are high. However, the main issue is that corn leafhopper is capable of transmitting the pathogens that cause corn stunt. Although the corn leafhopper has been confirmed in Kentucky, the disease corn stunt has not yet been confirmed in 2025. In fact, although corn leafhoppers have been detected across southern and mid-south states, corn stunt has only been confirmed in one county in Arkansas.

<https://cropprotectionnetwork.org/maps/corn-stunt-pathogens>

Symptoms of corn stunt include stunted plants and malformed or small ears. Leaves of affected plants can appear reddish in color (Figure 2). Corn stunt is easy to be confused with other corn disorders, including drought stress and nutrient deficiencies. Ear damage or other issues that prevent sugar accumulation in the ear will result in anthocyanin accumulation or red discoloration of the leaves, which can be also confused with corn stunt.

The combined effects of corn leafhopper feeding and the transmission of plant pathogens can cause substantial losses in corn productivity and quality. In central Brazil, where corn leafhoppers are prevalent, 10 to 60% of plants showing disease symptoms—predominantly due to maize bushy stunt phytoplasma—were observed in non-irrigated corn fields. In irrigated fields, 65 to 100% of corn plants were infected, leading to total yield loss in some areas in 1998.

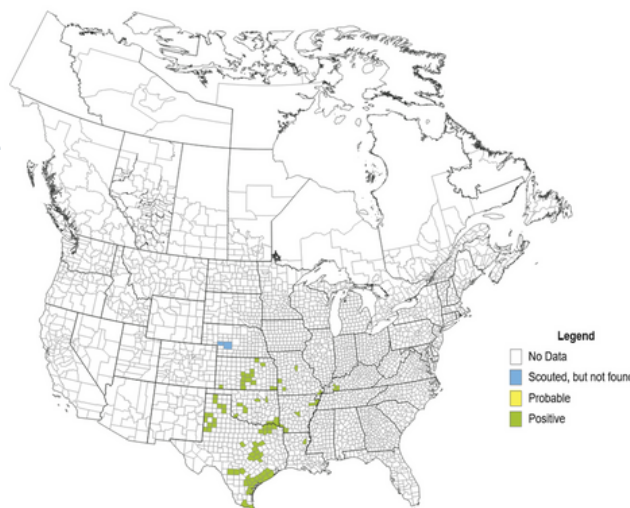
Management

In Kentucky, management of corn leafhopper and corn stunt are not needed at this time. Due to Kentucky's cold winters, the presence of corn leafhoppers in the state is usually the result of migration from states to our south. Migration of the corn leafhopper can be annually monitored



at the corn leafhopper map: <https://cropprotectionnetwork.org/maps/corn-leafhopper> (Figure 3). This map reports the date corn leafhoppers were reported in each state and allows stakeholders to track the northward movement of the leafhopper from May in Texas to western Kentucky in mid-July. (late July). By the time corn leafhoppers reached Kentucky in mid-July, corn planted within the regular planting window (around April–May) in Kentucky would be unlikely to experience major yield loss from corn leafhoppers and corn stunt.

Corn leafhoppers and corn stunt are more concerning when detected in late-planted or young corn. Infections that occur in vegetative (V) stages are more likely to result in yield loss. Therefore, monitoring corn leafhoppers during the early growth stages (up to V8–V10) is one of the most important steps in disease management. If the corn leafhopper is detected before V8–V10 insecticide application(s) may be necessary.



The University of Kentucky Entomology and Plant Pathology programs are collaborating with other universities across the United States in a project to track corn leafhoppers and detect the pathogens that cause corn stunt, and assess their potential impact in Kentucky. If corn stunt is suspected, submit samples to your County Extension Agent for submission to the Plant Disease Diagnostic Laboratory.

For more information please contact me at ashley.norton@uky.edu.

Other Events

Kentucky State Fair

August 14-24, 2025

Louisville, Kentucky

Hardin County Ag Development Council Meeting

August 27, 2025 @ 5:30 pm

Hardin County Extension Office

Cattlemen's Annual Meeting

November 10, 2025

Hardin County Extension Office

SERVICES WE PROVIDE:

- Farm Visits
- Insect ID
- Manure/Litter Testing
- Plant Diagnostic Testing
- Forage Testing
- Soil Testing
- Weed ID

ITEMS FOR CHECKOUT:

- Grain Moisture Tester
- Hay Probe
- Hay Moisture Tester
- Soil Probe/Bags
- Soil Penetrometer
- Windrow Moisture Tester

Trout with Herb Sauce



- 2 pounds trout fillets
- 1 tablespoon salt-free seasoning blend
- ¼ teaspoon salt
- 2 tablespoons olive oil
- 2 teaspoons garlic powder
- 4 tablespoons lemon juice
- 2 tablespoons unsalted butter, softened
- 2 tablespoons parsley, chopped

1. Wash hands with warm water and soap, scrubbing for at least 20 seconds, especially after handling raw fish.
2. Preheat oven to 325 degrees F.
3. Season top of fish fillets with salt-free seasoning and salt.
4. In a large skillet, heat olive

oil on medium heat until hot but not smoking. Add trout fillets to skillet. Cook fish for 3 to 5 minutes or until lightly browned on the bottom.

5. Flip fillets over and cook 2 more minutes.
6. Remove fillets from skillet and place in a covered dish. Place in preheated oven for 5 to 10 minutes while preparing sauce.
7. Add garlic powder and lemon juice to olive oil remaining in the skillet. Cook to combine on medium heat for 2 minutes. Remove from heat and add butter and parsley. Stir sauce until butter is fully melted and forms a creamy mixture.
8. Remove fish from oven and check that it has reached an internal temperature of 145 degrees F and flakes easily with a fork.
9. Cover fillets with sauce.
10. Serve immediately. Store leftovers in the refrigerator within 2 hours.

Yield: 8 servings
Serving Size: 4 ounces

Nutrition facts per serving:
450 calories; 28g total fat; 7g saturated fat; 0g trans fat; 145mg cholesterol; 310mg sodium; 1g total carbohydrate; 0g dietary fiber; 0g sugars; 0g added sugars; 47g protein; 45% Daily Value of vitamin D; 8% Daily Value of calcium; 20% Daily Value of iron; 20% Daily Value of potassium.



This institution is an equal opportunity provider. This material was partially funded by USDA's Supplemental Nutrition Assistance Program — SNAP.



USDA
Supplemental Nutrition Assistance Program
Putting Healthy Food Within Reach

This work is supported by the Expanded Food and Nutrition Education Program from the USDA National Institute of Food and Agriculture.



If you have any questions please contact us at
**270-765-4121, ashley.norton@uky.edu or
joseph.paterson@uky.edu**