

LIVESTOCK FARM TOUR


SATURDAY, JULY 27TH


Busses loading at 8:30 am at 111 Opportunity Way
Busses will return at 11:45 am

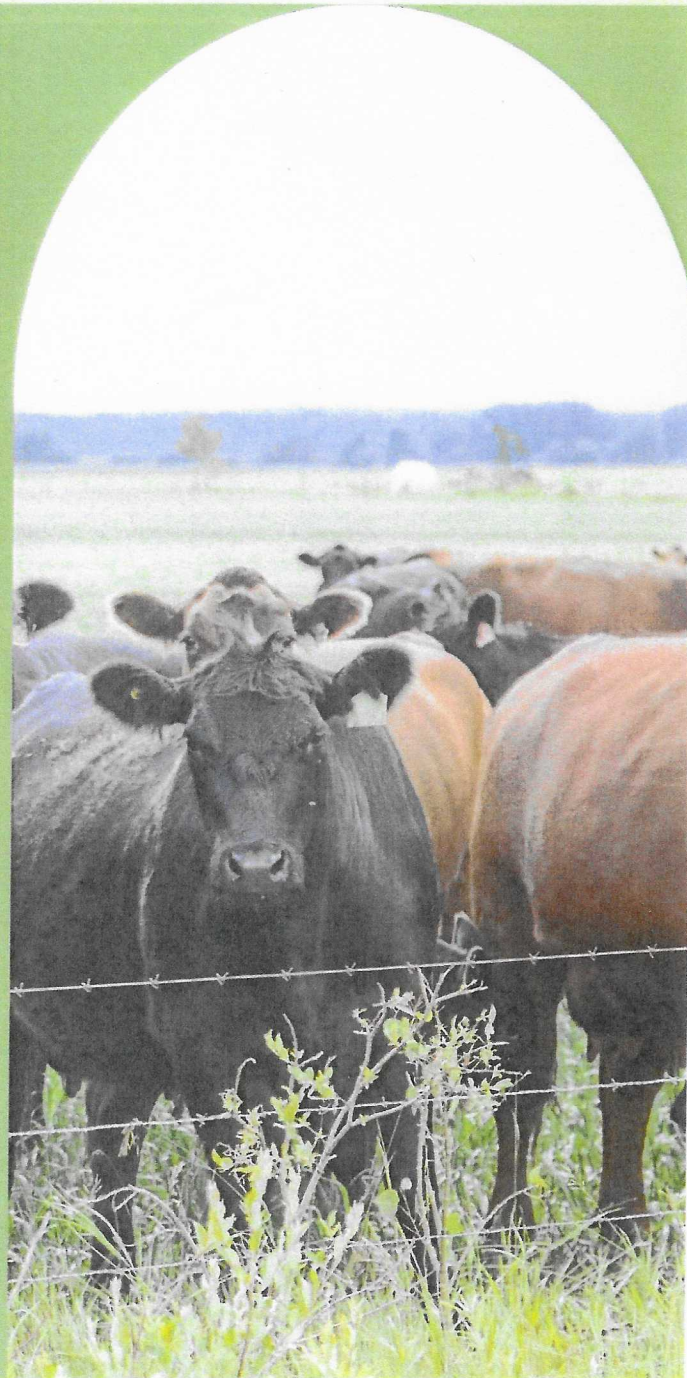
Learn about NRCS
cost-share programs
and see them in action
on a local cattle farm.

A lunch will be provided by
the Hardin County
Cattlemen for attendees.

Call or text the Hardin
County Extension Office at
270-765-4121 to register!

 Cooperative
Extension Service

 Natural Resources Conservation Service
U.S. DEPARTMENT OF AGRICULTURE



**Cooperative
Extension Service**

Agriculture and Natural Resources
Family and Consumer Sciences
4-H Youth Development

MARTIN-GATTON COLLEGE OF AGRICULTURE, FOOD AND ENVIRONMENT

Educational programs of Kentucky Cooperative Extension serve all people regardless of economic or social status and will not discriminate on the basis of race, color, ethnic origin, national origin, creed, religion, political belief, sex, sexual orientation, gender identity, gender expression, pregnancy, marital status, genetic information, age, veteran status, physical or mental disability or reprisal or retaliation for prior civil rights activity. Reasonable accommodation of disability may be available with prior notice. Program information may be made available in languages other than English. University of Kentucky, Kentucky State University, U.S. Department of Agriculture, and Kentucky Counties, Cooperating



Disabilities
accommodated
with prior notification